



PETRA
Network

PrEclinical and TRANslational research in Neuro-oncology

*A structuring action of the Cancéropôle PACA
A multisite action MARSEILLE - NICE*



Objective



*Structuring the
Neuro-oncology in
the Région Sud*

The PETRA network aims to **create in the Région Sud a consortium of researchers and clinicians** around 3 major issues in neuro-oncology:

- **treatment of primary adult and pediatric brain tumors**, the majority being still incurable to date
- **brain metastases** constantly increasing
- emerging issue of **neurotoxicity**.

The PETRA network **wishes to facilitate translation of the results from bench to patients' bedside** by developing relevant 3D human preclinical models and animal models mimicking the disease while **improving interactions between researchers and clinicians at the regional level**.

Structure



The PETRA network gathers **6 teams specialized in adult and pediatric neuro-oncology**, distributed between Marseille and Nice, and expert in preclinical models and translational research.

The coordinators:

- **Principal coordinator**

Aurélie Tchoghandjian
CNRS, AMU, Marseille

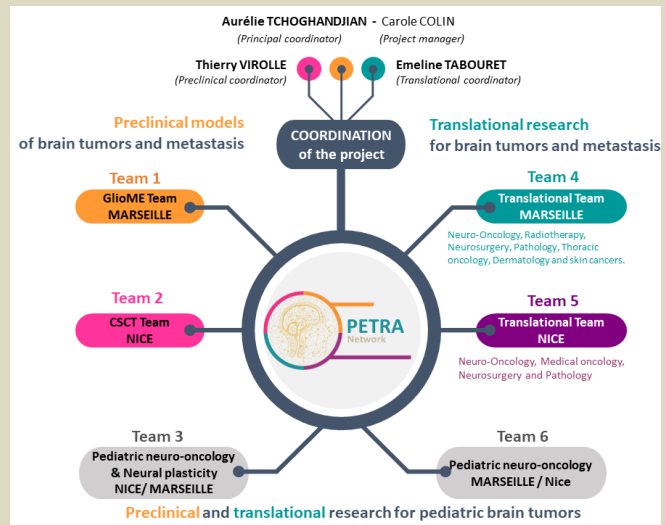
- **Preclinical coordinator**

Thierry Virolle
INSERM, Unice, Nice

- **Translational coordinator**

Emeline Tabouret
AMU, APHM, Marseille

*6 teams expert in
adult and pediatric
Neuro-Oncology*



Our offer



*3 platforms to help
you with
preclinical &
translational
research issues*

The PETRA network includes **3 platforms** :

- **PETRA“TECH”**: a **technical platform** with a large offer of **3D human preclinical models, animal models** and state-of-the-art technics in animal experimentation.
- **PE“TRANSLA”** : a **translational research platform** making easier the access to **annotated biological resources** (partnership with the CRBs of Marseille and Nice), and supporting teams towards clinical trials
- **PETR“ADVICE”** : a **platform for advice, orientation and formation** to help the community in the design of experimental projects, in the choice of optimal preclinical models and offering access to specific technologies/expertise.

Contact



For any request, please complete the contact form downloadable from the Cancéropôle PACA website (scan the QR code or go to: <https://canceropole-paca.com/propulser-vos-recherches/acceder-aux-technologies-expertises/>) and send it by email to carole.colin@univ-amu.fr

